



THE LONDON BOROUGH

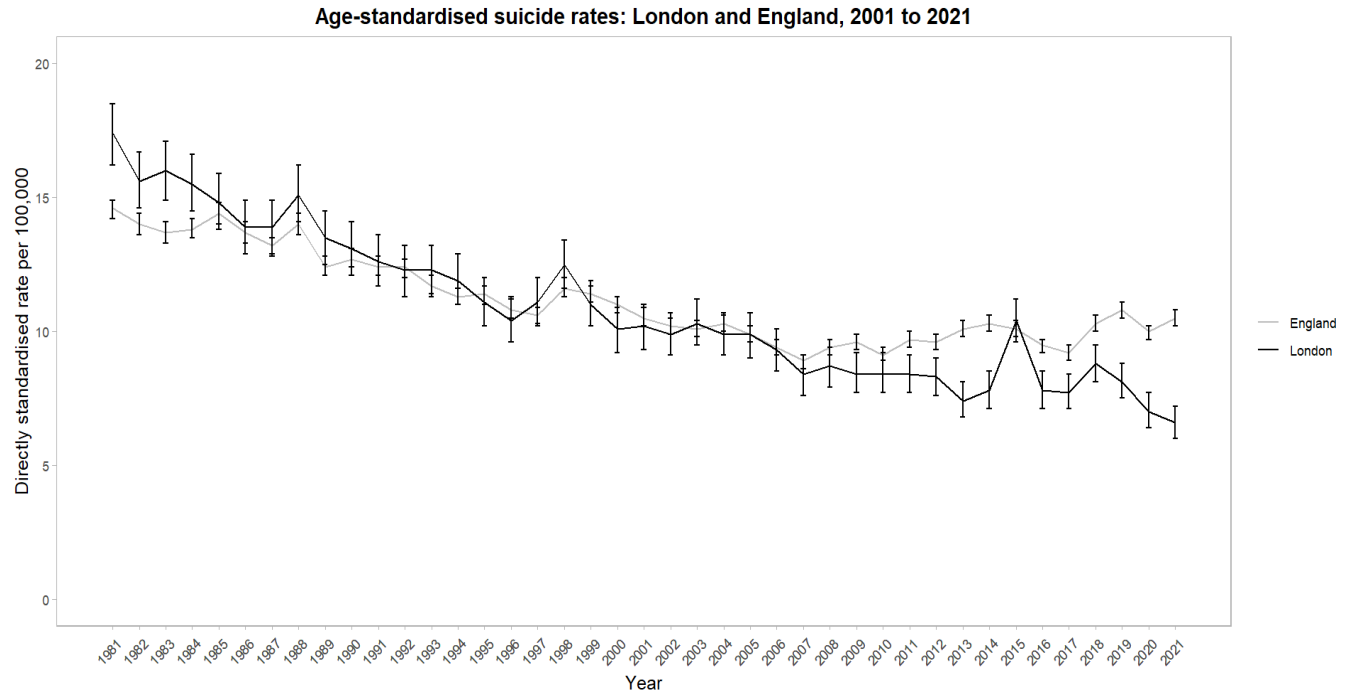
2024 Suicide Audit:
A trend analysis

Jocelyne Noubiap, Public Health Intelligence Analyst

Purpose of Audit

- Conducted to inform the review of Bromley's suicide prevention plan.
- Compares local and national statistics to reduce suicides and address inequalities.

Suicide rates: London and England

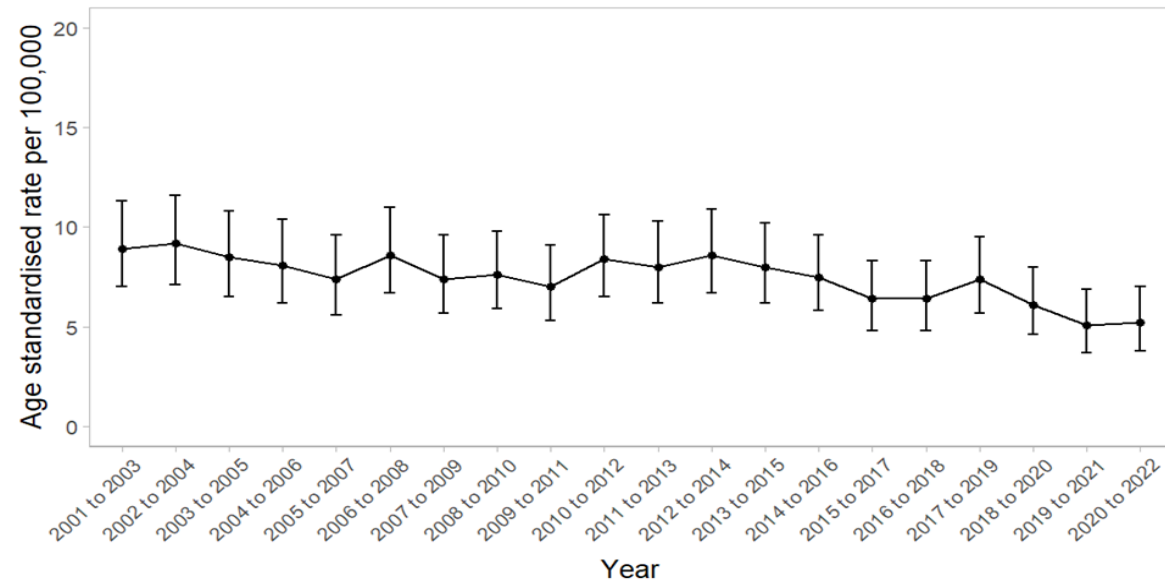


Source: Office for National Statistics, 2022

Age-standardised suicide rates: London and England, 2001 to 2021. Source: ONS, 2022.

Suicide rates: Bromley

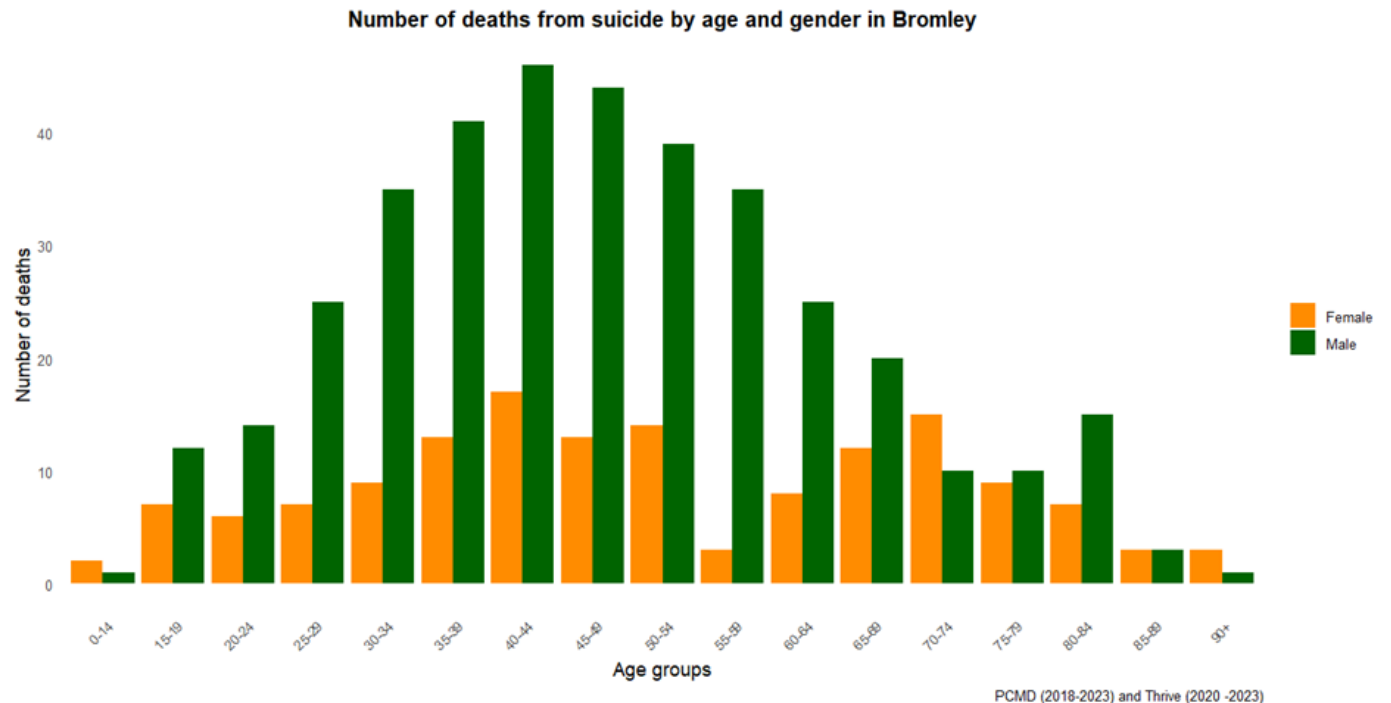
Age-standardised suicide rates in Bromley, 2001 to 2022



Source: Office for National Statistics, 2023

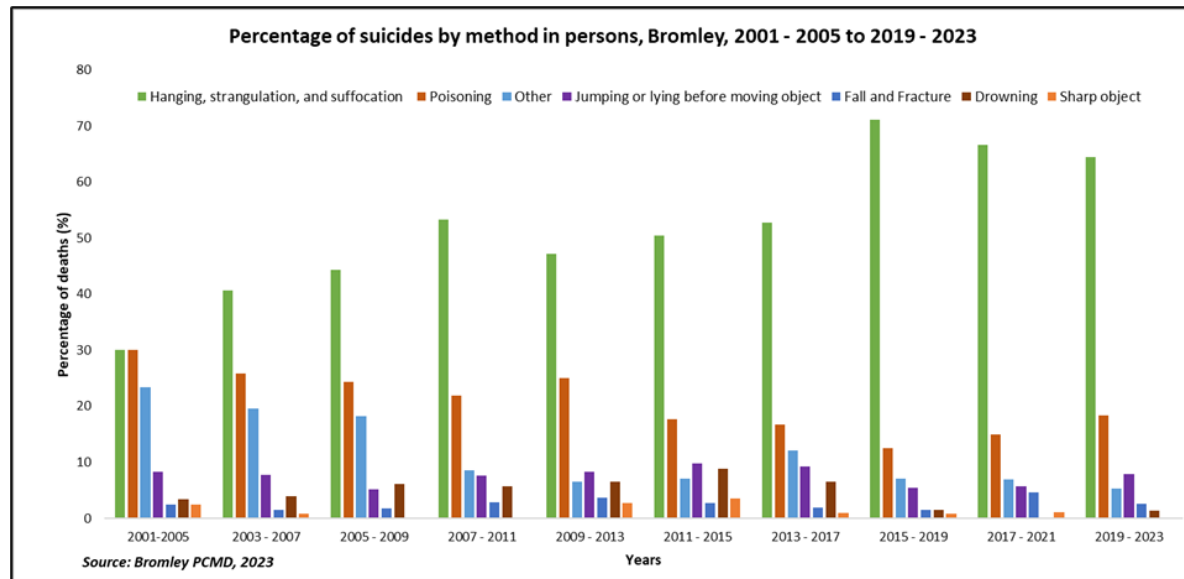
Age-standardised suicide rates in Bromley, 2001 to 2022. Source: ONS, 2023. Rates are calculated at 3-year intervals.

Suicide rates: Bromley



Number of deaths from suicide by age and gender in Bromley, 2018 to 2023. Source: PCMD and Thrive, 2023

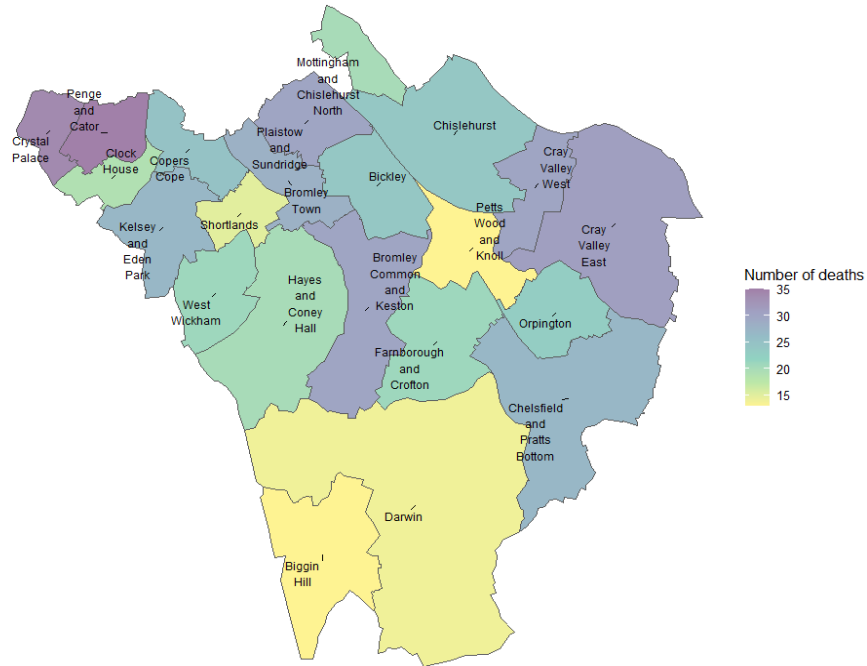
Method of suicide



- Hanging by suffocation or strangulation is the most common method of suicide, with a slight increase over the years.
- Poisoning also follows a similar pattern as the second most common method and fluctuating decreases in the use of this suicide method.

Ward of residence

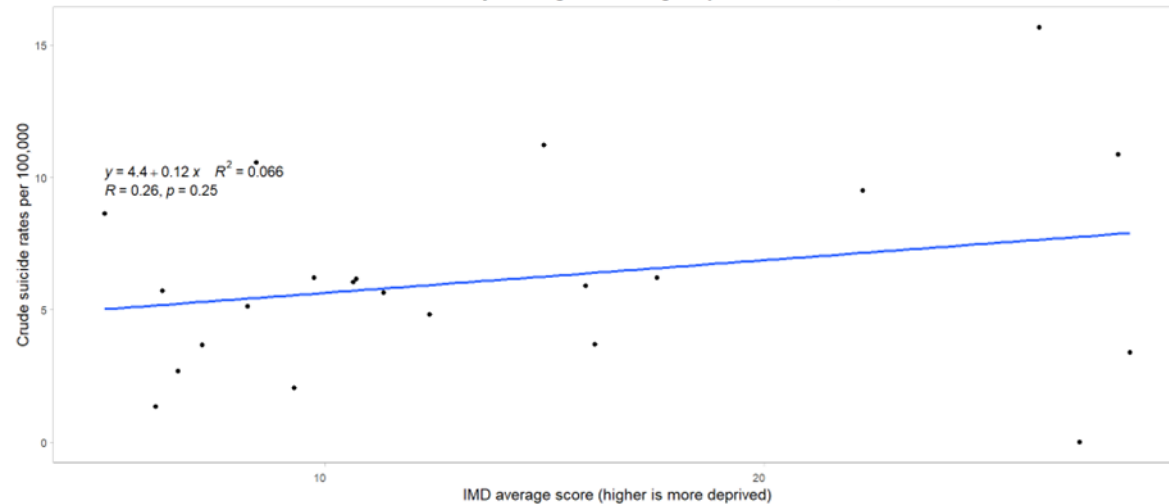
Map showing the number of suicidal deaths by ward of residence in Bromley, 2018 - 2023



Source: PCMD and Thrive, 2018-2023

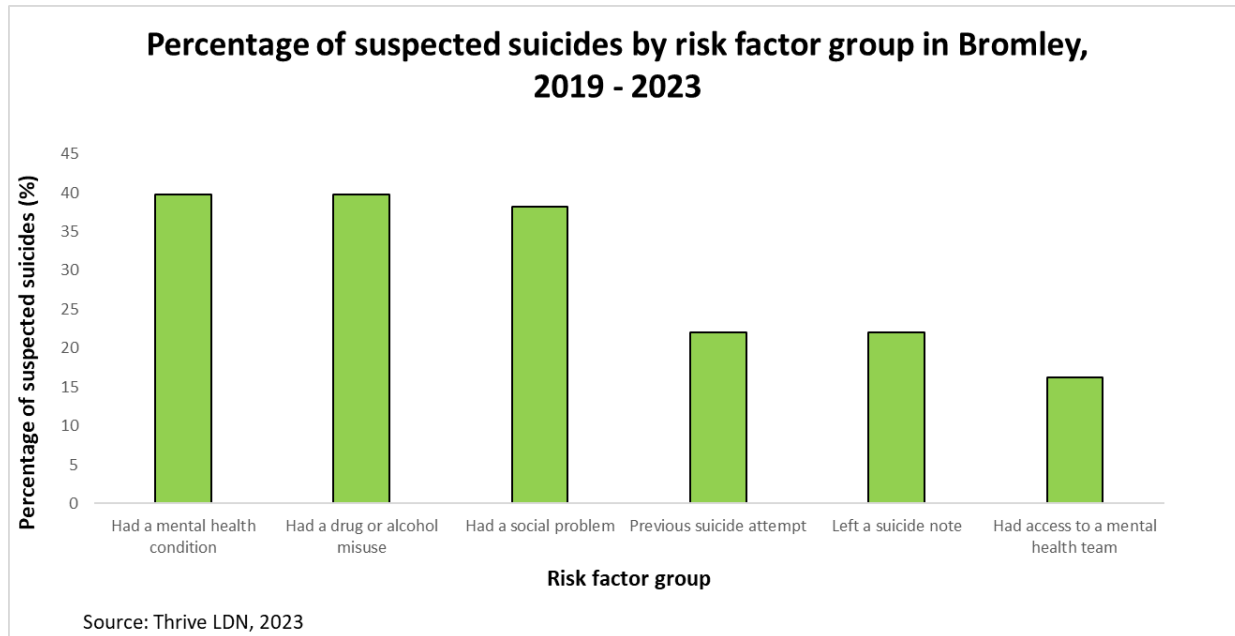
Deprivation

Crude rate of suicide by ward against average deprivation score, 2018 - 2022.



Source: Primary Care Mortality Database, 2024

Risk factors

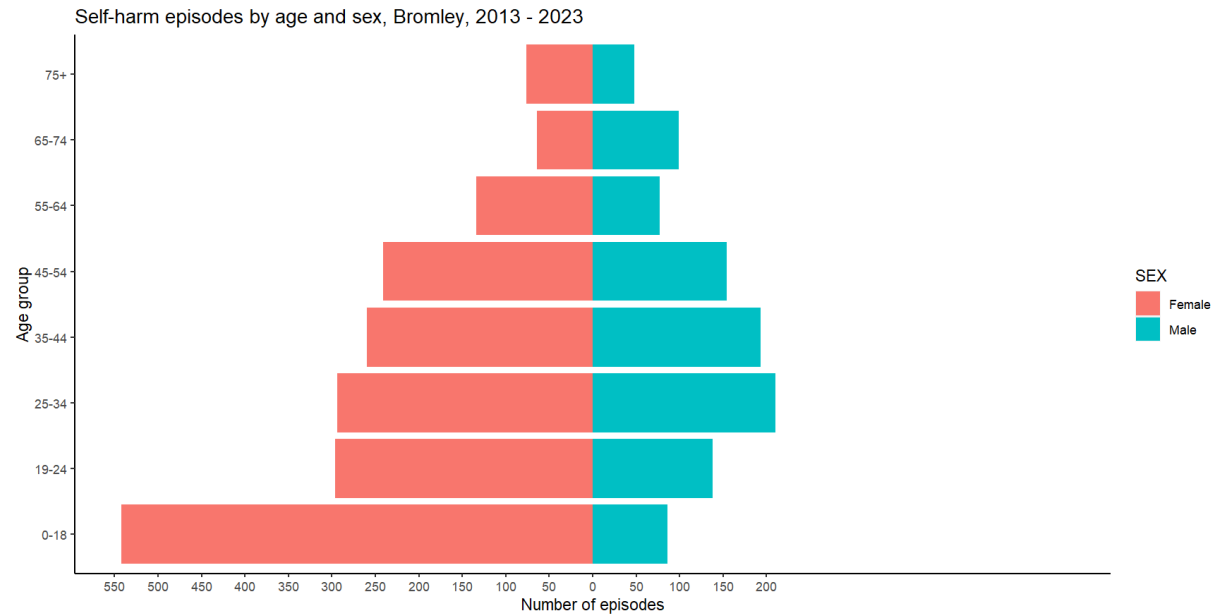


Intentional Self –Harm

Definition

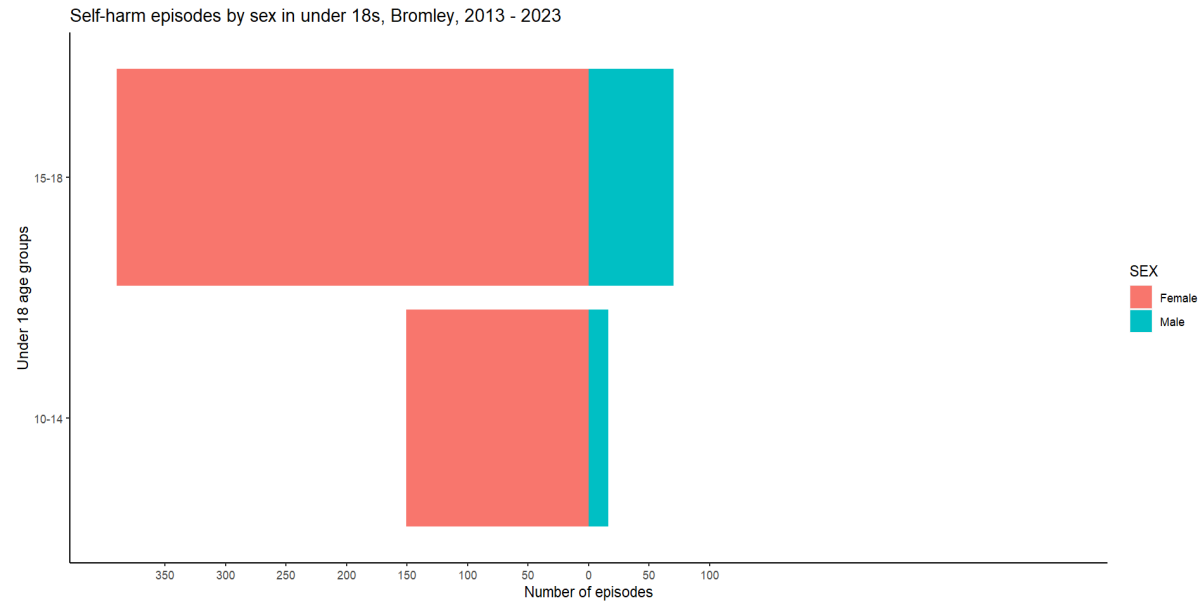
- NICE suicide definition: any act of self-poisoning or self-injury carried out by an individual irrespective of motivation.
- This definition excludes instances stemming from excessive alcohol or drug consumption, starvation due to anorexia nervosa, and accidental self-harm.

Demographic differences



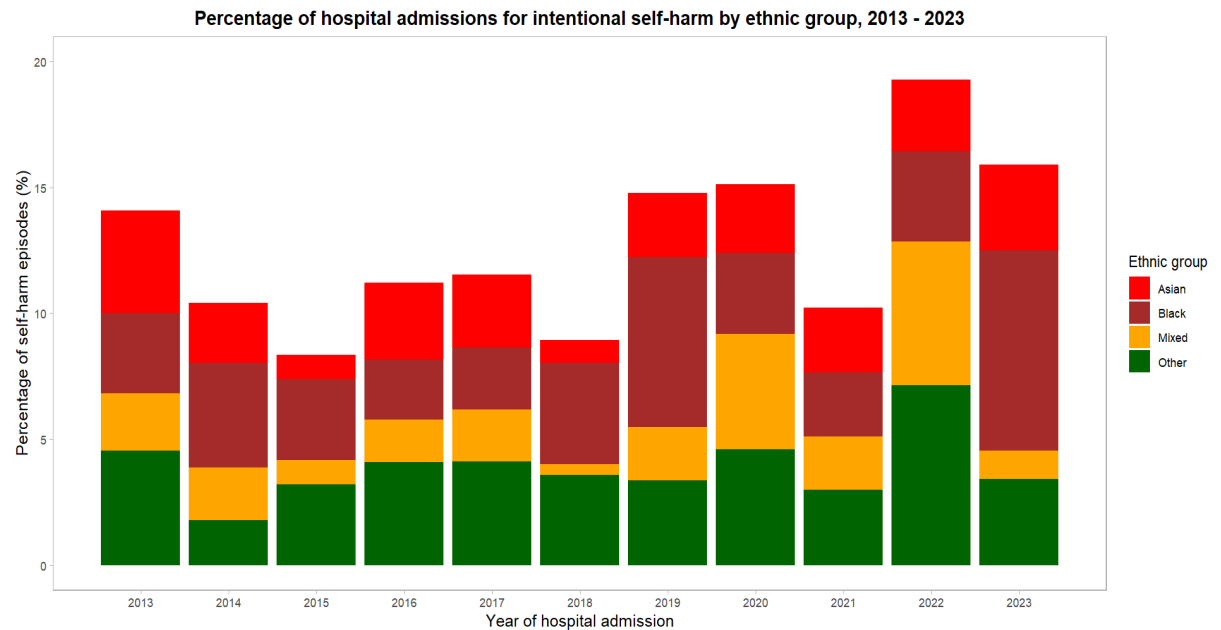
Source: Hospital Episode Statistics, 2024

Self-harm episodes in under 18s



Source: Hospital Episode Statistics, 2024

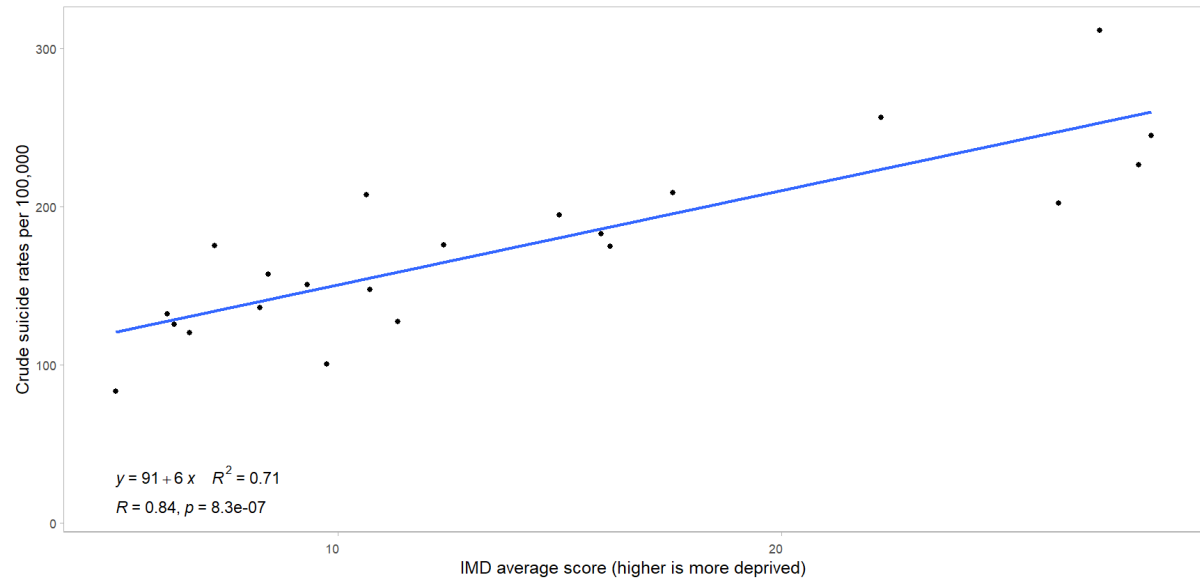
Ethnicity



Source: Hospital Episode Statistics, 2023

Deprivation and intentional self-harm

Crude rate of self-harm episodes by ward against average deprivation score, 2018 - 2022.



Source: Hospital Episode Statistics, 2024

Conclusions

Suicide rates in Bromley fluctuate annually, averaging around 21 suicides per year, requiring continuous prevention efforts.

Men are disproportionately affected by suicide, while intentional self-harm rates are higher among women and young people.

Common suicide methods in Bromley include hanging, strangulation, or suffocation, emphasising the need for targeted interventions.

Hospital admissions for intentional self-harm are highest among girls aged 0 to 18 years, necessitating early intervention.

There is an increase in intentional self-harm admissions among individuals from "Black" or "Other" ethnic backgrounds.

Older residents (aged 65 and over) with fewer self-harm admissions are at higher risk of subsequent suicide, requiring tailored support.

Deprivation is associated with hospital admissions for intentional self-harm, particularly in specific wards like Penge and Cator and Cray Valley East, highlighting the need for targeted interventions.